

# 4G/LTE Outdoor Router

## Broadband Access without Boundaries

**BEC 6800RUL R7**



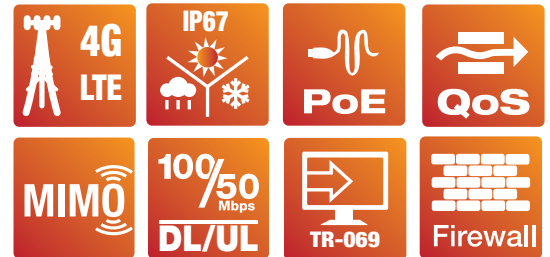
### Overview

The BEC 6800RUL 4G LTE Outdoor Broadband Router supports the latest generation of LTE fixed wireless networks providing connectivity for homes, businesses, rural areas and the underserved. The 6800RUL integrates a high performance CPU with an embedded LTE module and advanced IP networking features enabling support of multiple high bandwidth applications at peak speeds up to 100Mbps downlink and 50Mbps uplink.

Homes and businesses with a weak or nonexistent wireless signal can benefit from the extended range and reach of the 6800RUL. Advanced MIMO antenna technology allowing service providers to deploy a single solution for their environment or application whether LOS (Line of Sight) or NLOS (Non-Line of Sight). Physical size and weight were key design considerations of the 6800RUL, it can be mounted directly on exterior walls, chimneys, lightweight poles and used for retrofitting applications such as the replacement of older generation wireless technology.

The 6800RUL is an industrial-grade outdoor fixed wireless router with an IP67 rated enclosure to withstand extreme weather conditions and harsh rugged deployments. In addition to outdoor, it can be installed in environments such as: manufacturing plants, industrial automation, stadiums, convention halls, stadium facilities, school campuses or virtually any venue requiring a robust wireless solution.

Easy Installation is realized with integrated IEEE 802.3af Power over Ethernet (PoE) support, eliminating the need for separate power and data cables. Site installation aides provide for rapid deployment and remote management via TR-069 minimize support expenses and maximize the operational efficiency and profitability for a service provider.



### Key Features

#### High Performance and support for Multiple LTE frequency Bands

- Category 3 UE, data rates of up to 100Mbps (DL) /50Mbps (UL)
- Advanced IP networking functionalities including bridge and router modes

#### Patented Dual Polarization MIMO antenna Technology

- Constant gain and efficient bi-directional transmission for maximum bandwidth and service coverage
- Optimize antenna design for LTE TDD

#### Lightweight, compact and unobtrusive design

- Multi angle/position mounting options, easily installed by single person
- Support Passive Power of Ethernet (PoE)
- Can be installed virtually anywhere

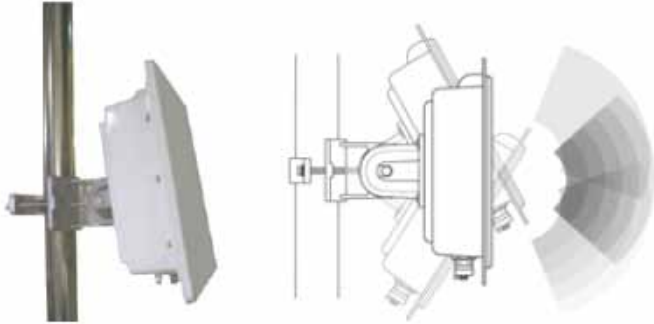
#### Designed for challenging/rugged deployments

- IP67 hardened enclosure with Industrial-grade components
- Designed for the toughest industrial environments

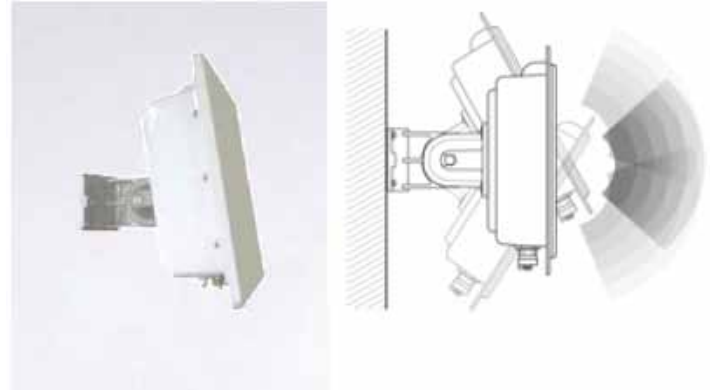
**Package includes PoE injector and mounting kit**

# Application Diagram

## Mounting Kit – Pole Mount



## Mounting Kit – Wall Mount



## Features & Specifications

### LTE Antenna Options

- Embedded Dual Polarized MIMO Directional (2496MHz ~ 2690MHz)
- VSWR: < 1.8
- Polarization: Vertical and Horizontal
- Gain: 16dBi

### Supported Frequency Bands

- LTE Band 41 (TDD)  
(2496MHz ~ 2690MHz) UL and DL
- Channel Bandwidth  
5MHz, 10MHz, 15MHz, 20MHz
- Maximum Transmit Power:  
+23dBm ± 2dB
- Receive Sensitivity  
-96dBm / 10MHz  
-93dBm / 20MHz @ QPSK
- Modulation  
DL: QPSK, 16QAM, 64QAM  
UL: QPSK, 16QAM

### Operational Mode

- Bridge or Routed

### Operating Mode in Routed Mode

#### Network Protocols and Features

- NAT, static routing and RIP-1/2
- NAT supports PAT and multimedia applications
- Virtual server and DMZ
- SNTP, DNS relay and DDNS
- IGMP snooping and IGMP proxy
- Supports DHCP server/client/relay

#### Quality of Service Control

- Supports the DiffServ approach
- Traffic prioritization based on protocol, port number and IP address

#### Firewall

- Built-in NAT Firewall
- Stateful Packet Inspection (SPI)
- Prevents DoS attacks including Land Attack, Ping of Death, etc.
- Access Control
- IP Filtering, MAC Filtering, URL Filtering
- Password protection for system management
- VPN pass-through

### Management

- Web-based GUI for remote and local management
- Firmware upgrade and configuration data upload and download via web-based GUI\*
- TR-069 supports remote management
- Syslog monitoring

### Hardware Specifications

#### Physical Interface

- 10/100 Ethernet LAN with IEEE 802.3af compliant PoE P.D
- SIM slot (for the SIM from Telco / ISP)
- LED Indicators: Power, LAN(PoE), Boot, LTE, and Internet

#### Physical Specifications

- Dimensions: 8.5" (W) x 7.5" (H) x 3.0" (D)  
(257mm x 227 mm x 91mm)
- Weight: 1.81kg (4lbs)
- IP-67 Grade Enclosure

#### Operating Requirements

- Operating temperature: -40°C to 60°C  
(-40°F to 140°F)