

LTE ENTERPRISE ROUTER

The BEC 6300VNL

BEC
6300VNL
ENTERPRISE
MULTI-SERVICE
ROUTER PROVIDES A
RELIABLE AND
COST-EFFECTIVE SOLUTION
FOR ENTERPRISE
CONNECTIVITY AND BUSINESS
CONTINUITY APPLICATIONS.



Multi-band LTE with support for
3G/2G Fallback



Dual-WAN ensuring High
Availability and Network Resilience



Major Carrier Certified, including:
Verizon, AT&T, and T-mobile



sales@bectechnologies.net 972.422.0877 www.bectechnologies.net

MULTI-SERVICE LTE Enterprise Router

DUAL-WAN interface
(4G/LTE) and Ethernet
WAN (Ewan)

4-port Gigabit
Ethernet Switch, USB
interface and SPI
Firewall

Carrier-grade Wi-Fi
802.11n access point

Secured VPN (IPSec,
GRE, LT2P and PPTP),
Dynamic Routing
(OSPF and BGP)



BUSINESS CONTINUITY

Multi-WAN connectivity; Redundancy and Network resilience for Gigabit, business DSL, WLAN, and 4G LTE services.



BRANCH OFFICE NETWORK

Dynamic Routing, Multiple Secured VPNs, MPLS Integration, Carrier-grade WiFi access point.



TELEPHONY FEATURES

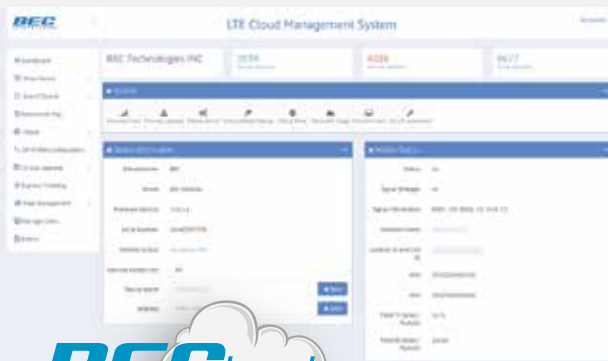
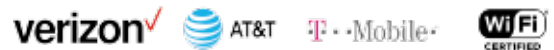
Integrated VoIP Technology provides advanced telephony features.



BEC 6300VNL Front



BEC 6300VNL Back



CLOUD-BASED REMOTE MANAGEMENT

The 6300VNL is tightly integrated with BECloud®, BEC's Cloud-Based Remote Management Platform. BECloud® enables real-time device monitoring, provisioning, troubleshooting and maintenance from a single centralized location. The platform will simplify device access, lower support expenses, accelerate Deployments/Service Delivery and maximizes the operational efficiency and profitability.