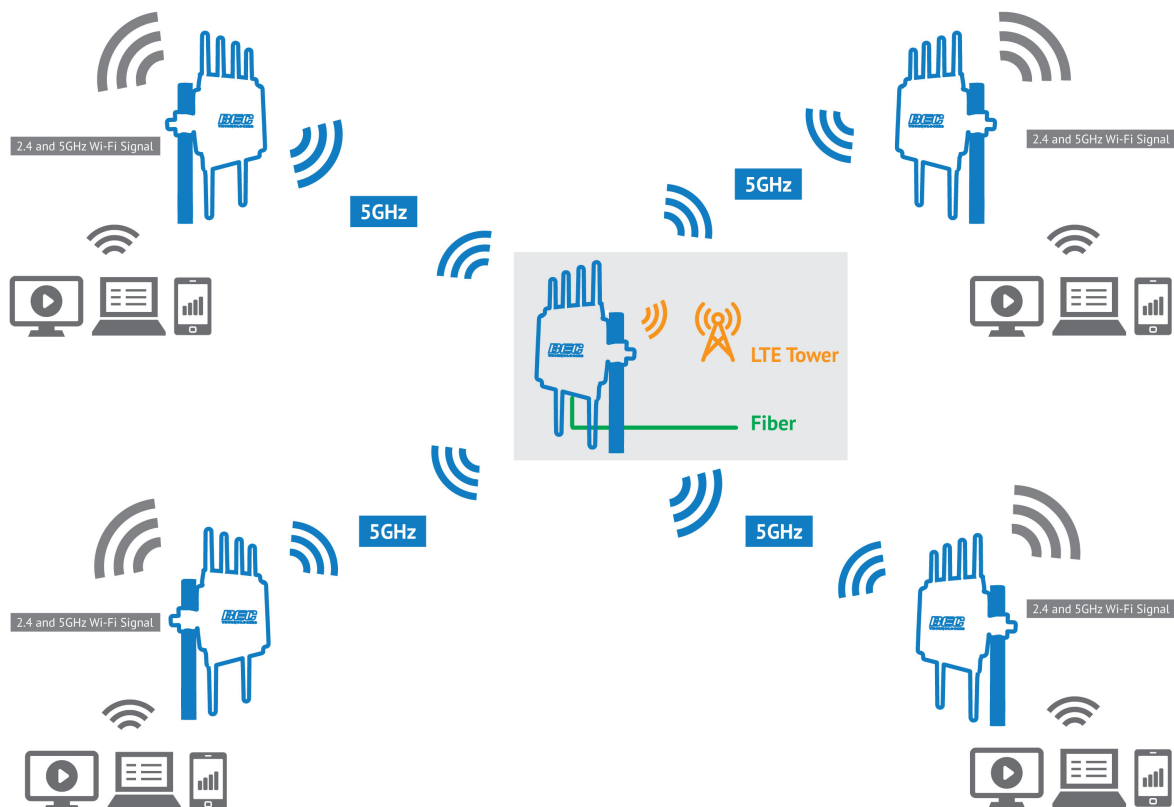


How to configure Wi-Fi Bridge on BEC 4700A/AZ 4G/LTE Outdoor Router

Summary

This article shows how to configure the Wi-Fi Bridge feature on BEC 4700A/AZ 4G/LTE Outdoor Router by using 5GHz. The Wi-Fi bridge feature allows you to establish a wireless link between two routers, putting them both on the same IP network. When the Wi-Fi bridge feature is enabled, the Wi-Fi bridge device will have no routing function.

Topology



Configuration



Step 1: Log into router's Web GUI page.

Step 2: Click on the **Configuration / Interface Setup / LAN**

Step 3: Change the IP Address to be within the same subnet as the other bridge device, but with a different last octet. For example, if the other router's IP address is 192.168.1.254/24, you would want to change this router's IP to 192.168.1.253/24.

Step 4: Disable the DHCPv4 Server on Wi-Fi Bridge device and then click Save.

▶ Status
▶ Quick Start
▶ Configuration
▶ Interface Setup
• Internet
• LAN
• Wireless 2.4G
• Wireless MAC Filter
• Wireless 5G
• Wireless 5G MAC Filter
• Wireless 5G Repeater
• Loopback
▶ Dual WAN
▶ Hotspot
▶ Advanced Setup
▶ Access Management
▶ Maintenance

Configuration	
▼ LAN	
IPv4 Parameters	
IP Address	192.168.10.253 
IP Subnet Mask	255.255.255.0
Alias IP Address	0.0.0.0 (0.0.0.0 means to close the alias ip)
Alias IP Subnet Mask	0.0.0.0
Snooping	<input type="radio"/> Activated <input checked="" type="radio"/> Deactivated
Dynamic Route	RIP1 <input type="text"/> Direction <input type="text"/> None <input type="text"/>
DHCPv4 Server	
DHCPv4 Server	 <input checked="" type="radio"/> Disabled <input type="radio"/> Enabled <input type="radio"/> Relay
IPv6 Parameters	
Interface Address/Prefix Length	<input type="text"/> / <input type="text"/>
DHCPv6 Server	
DHCPv6 Server	<input type="radio"/> Disable <input checked="" type="radio"/> Enable
DHCPv6 Server Type	<input checked="" type="radio"/> Stateless <input type="radio"/> Stateful
Start Interface ID	<input type="text"/>
End Interface ID	<input type="text"/>

Step 5: Click on the **Configuration / Interface Setup / Wireless 5G Repeater**.

Step 6: Select **“Activated”** to enable the feature.

Step 7: Click Scan button to enable the site survey.

Configuration

Wireless 5G Repeater

Status: Activated Deactivated

SSID:

Security Type: OPEN

Save Scan

Site Survey

CH	SSID	BSSID	Security	RSSI
----	------	-------	----------	------

Step 8: Scroll down to the site survey section and locate the wireless network you wish to join.

Wireless 5G Repeater

Status: Activated Deactivated

SSID: OneZone

Security Type: WPA2-PSK

WPA Algorithms: AES

Pre-Shared Key:

Save Scan

Site Survey

CH	SSID	BSSID	Security	RSSI	
<input type="radio"/>	36	GMAvt-WirelessBF37	60:03:47:25:bf:38	WPA/WPA2	14
<input type="radio"/>	36	GMAvt-Wireless3FC2	60:03:47:3a:3f:c3	WPA/WPA2	12
<input type="radio"/>	36	GMAvt-WIFI	60:03:47:33:84:cf	WPA/WPA2	22
<input type="radio"/>	36	GMAvt-Wireless92B4	60:03:47:34:92:b5	WPA/WPA2	8
<input type="radio"/>	36	ParagonIoT-5G	50:c7:bf:6e:12:9d	WPA2	6
<input type="radio"/>	36	GMAvt-Wireless9DDF	60:03:47:28:9d:e0	WPA/WPA2	14
<input type="radio"/>	44	NZBM-5G	e8:fc:af:fc:9f:76	WPA2	12
<input checked="" type="radio"/>	136	OneZone	66:03:47:3a:c1:84	WPA/WPA2	14
<input type="radio"/>	136	OneZone	66:03:47:3e:99:4d	WPA/WPA2	36
<input type="radio"/>	149	AmpexBrands	02:9f:c2:6b:6a:8e	WPA2	6
<input type="radio"/>	149	AmpexSecure	12:9f:c2:6b:6a:8e	WPA2	6
<input type="radio"/>	153	BEC N2G	60:03:47:3d:a1:4c	WPA/WPA2	32

Step 9: Enter the Pre-Shared Key (or Wi-Fi password) to connect to this network and then click save. Make sure the Security Type and WPA Algorithms are correct.

Troubleshooting

- If you do not see any networks listed, click the Scan button again. If still nothing appears, make sure your router's Wi-Fi is enabled, or try using a different web browser.
- Make sure the Security Type and WAP Algorithms are correct if the Wi-Fi does not connect.
- If you can't access this router's console after you changed the IP address. Make sure you enter new IP address of the router in your web browser if you are accessing it locally, and renew your PC's IP address if necessary.