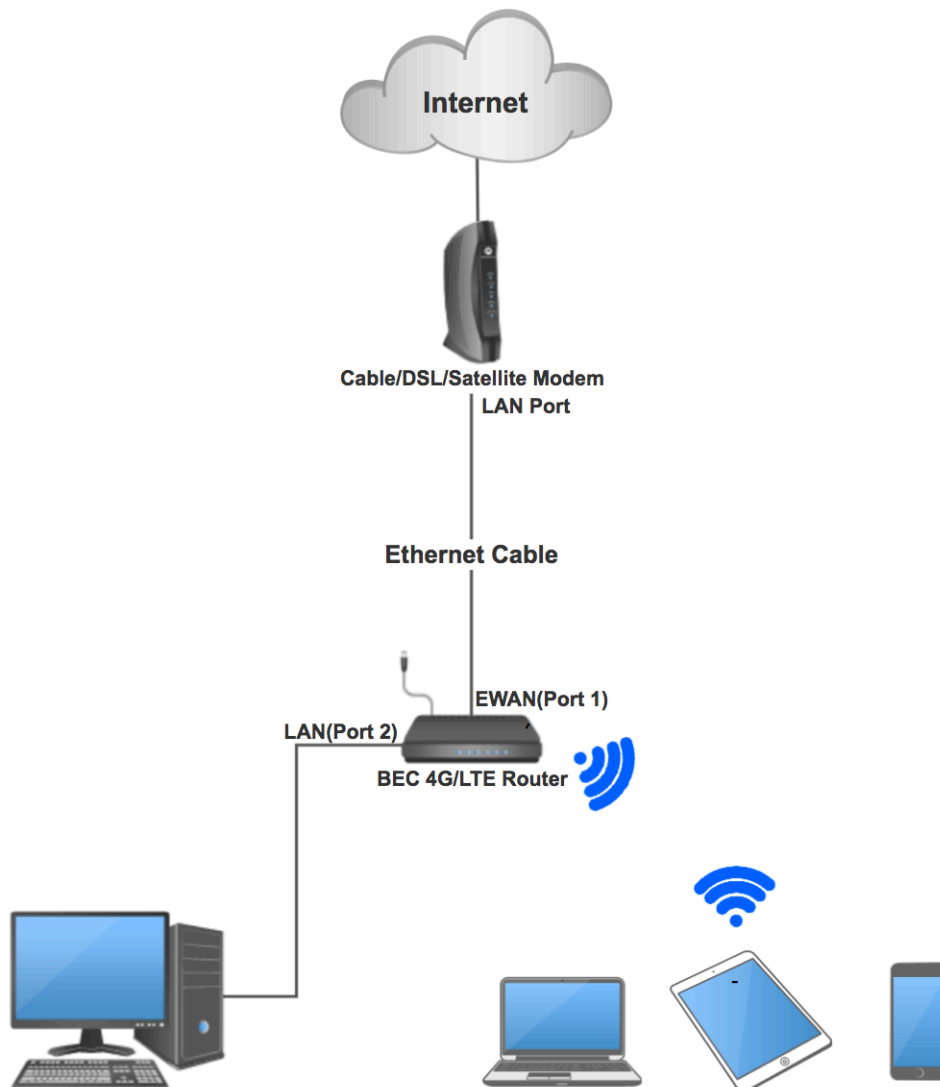


How to connect Wired WAN Modem to BEC 4G/LTE Router

Summary

This article provides instructions for configuring BEC 4G/LTE to use wired internet source, such as a Cable, DSL, or Satellite modem. In this setting, BEC 4G/LTE router will control the failover for the network.

Network Topology



Configuration

Step 1: Log into router's Web GUI page.

Step 2: Click on the **Configuration / Interface Setup / Internet**

▸ Status	Configuration	
▸ Quick Start		
▸ Configuration		
▾ Interface Setup		
▸ Internet		
▸ LAN		
▸ Loopback		
▸ Dual WAN		
▸ Advanced Setup		
▸ VPN		
▸ Access Management		
▸ Maintenance		

▾ Internet		
WAN Interface		EWAN(LAN1)
Status	<input checked="" type="radio"/> Activated <input type="radio"/> Deactivated	
IPv4/IPv6		
IP Version	<input type="radio"/> IPv4 <input checked="" type="radio"/> IPv4/IPv6 <input type="radio"/> IPv6	
ISP Connection Type		
ISP	<input checked="" type="radio"/> Dynamic IP Address <input type="radio"/> Static IP Address <input type="radio"/> PPPoE	

Step 3: Select “**EWAN(LAN1)**” from drop down menu on WAN Interface.

Step 4: Select “**Activated**” to enable the EWAN, default is “**Deactivated**”.

Step 5: Select “**IPv4/IPv6**” on IP Version.

Step 6: Select “**Dynamic IP Address**” on ISP.

Step 7: Click “**Save**” to save the setting.

Step 8: Power off both the BEC router and the modem. If the modem doesn't have an on/off switch, just pull out the power cord.

Step 9: Connect them with an Ethernet cable, while both devices are turned off.

Step 10: Power on just the modem and wait until the modem connects to your ISP's network.

Step 11: Power on the BEC router after the modem connects to the network.

Step 12: BEC router will connect to your modem after it goes through the startup process, and all devices that are connected to the BEC router (Wired or wireless) should have internet access.

NOTE: In this setting for BEC 4G/LTE router, the wired internet (Cable / DSL / Satellite modem) will be the primary WAN and LTE will be the secondary WAN. When the primary connection is down, BEC router will failover to LTE.

Troubleshooting

If you are unable to get through to the internet, please review the following:

- Verify your LAN IP is different from your modem's LAN IP. The default LAN IP for BEC router is **192.168.1.X**. If it is same as your modem's LAN IP, please change BEC's LAN IP to the different subnet such as 192.168.2.X.
- Call your ISP and tell them you need to reset your cable/DSL/Satellite modem. Your modem may have saved the information from the last connection you had, and you need to restore the cable modem to default settings.