

Quick Start Guide

BEC 7000 R26-W

Gigabit LTE Outdoor Router with Hotspot

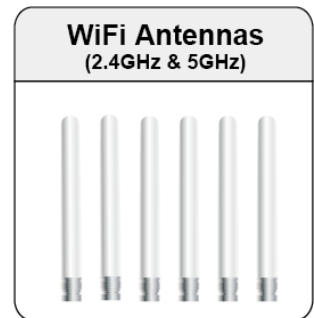
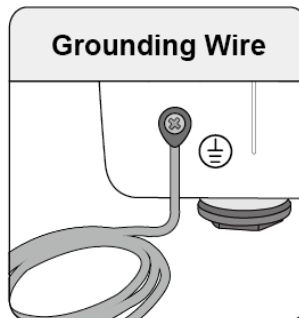
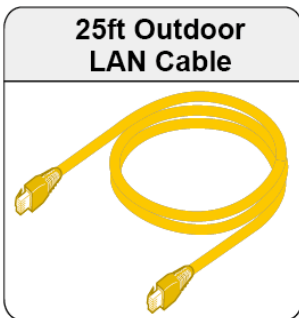
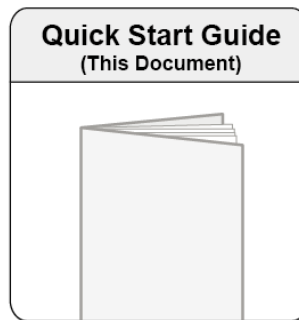
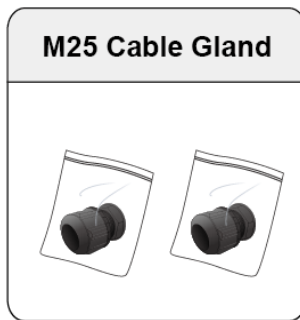


❖ PLEASE READ THE QUICK START GUIDE AND FOLLOW THE STEPS CAREFULLY. THIS QUICK START GUIDE WILL HELP YOU INSTALL THE DEVICE PROPERLY AND AVOID IMPROPER USAGE. IF YOU NEED MORE INFORMATION ON THIS SOFTWARE CONFIGURATION, PLEASE REFER TO THE USER MANUAL.

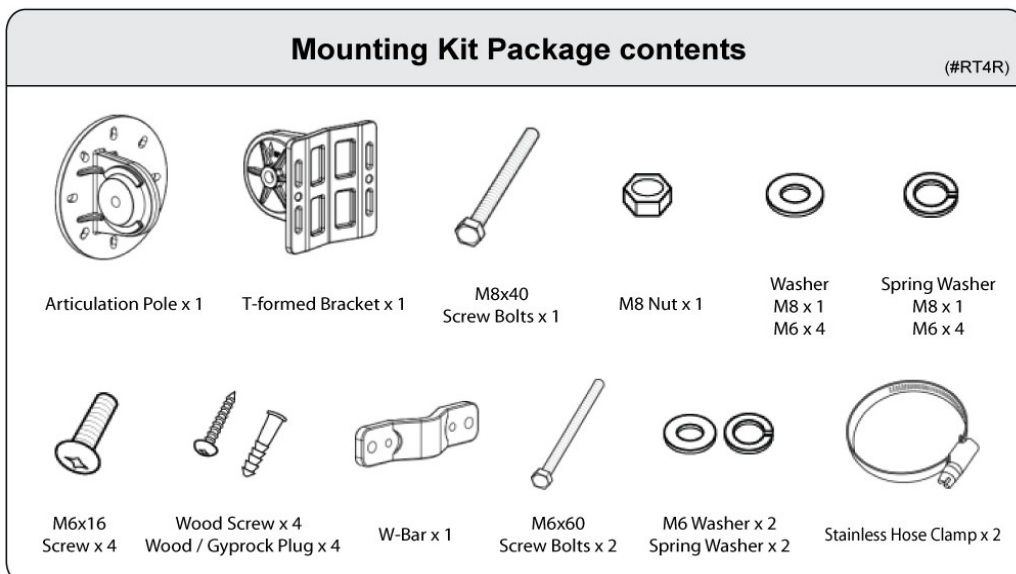
❖ INDUSTRIAL SIM IS RECOMMEND! (BEC 7000 R26-W)

Package Contents

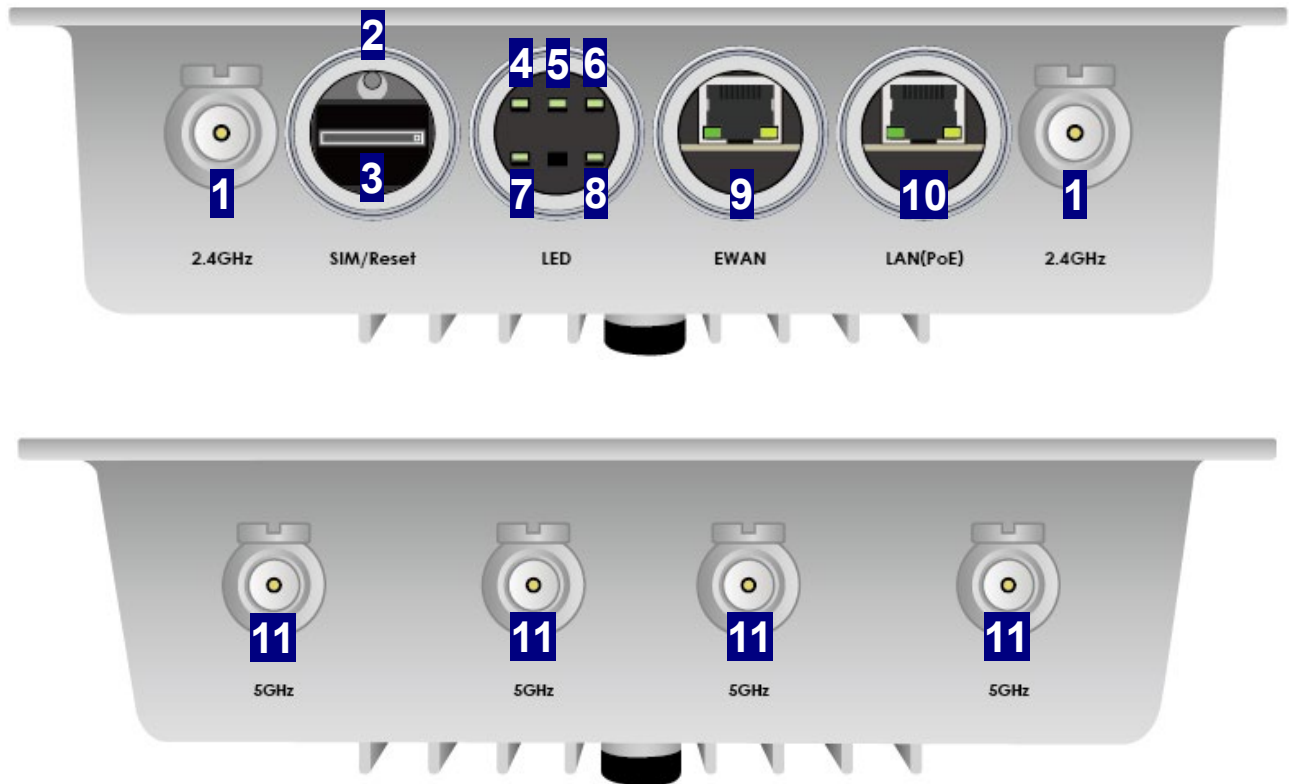
- ✓ BEC Outdoor Router x 1
- ✓ M25 Cable Gland x 2
- ✓ 2.4G Wi-Fi Antennas x 2
- ✓ This Quick Guide x 1
- ✓ Outdoor LAN Cable x 1
- ✓ 5G Wi-Fi Antennas x 4
- ✓ Gigabit PoE Injector x 1
- ✓ Grounding Wire x 1



- ✓ The Mounting Kit x 1



Hardware Overview (BEC 7000 R26-W)



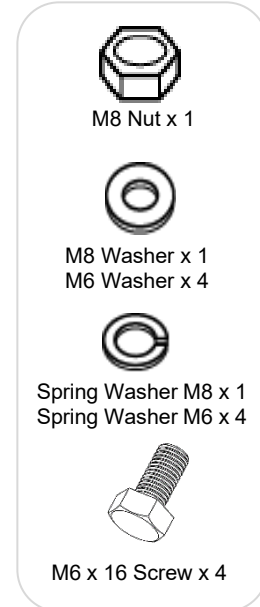
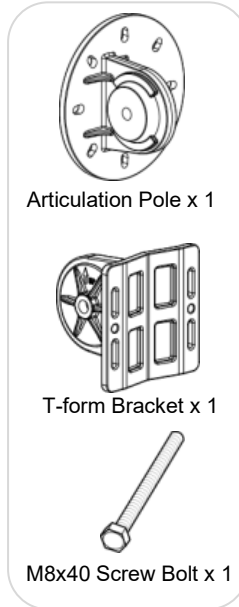
PORT & LED		MEANING	
1	WIFI Antenna Connectors (2.4GHz)	Screw the supplied 2.4GHz antennas onto the antenna connectors on both sides.	
2	RESET	After the device is powered on, press it 6 seconds or above : to restore to factory default settings (this is used when you cannot login to the router, e.g. forgot your password)	
3	SIM Card Slot	Insert the mini SIM card (2FF) with the gold contact facing down. Push the mini SIM card (2FF) inwards to eject it <i>* Power off the BEC 7000 R26-W before inserting or removing the SIM card(s)</i>	
4	2.4GHz WIFI LED	Green	Wireless connection established
		Blinking	Data being transmitted / received
5	5GHz WIFI LED	Green	Wireless connection established
		Blinking	Data being transmitted / received

PORT & LED		MEANING	
6	LTE LED (Received Signal Strength Indicator)	Green	RSSI greater than -69 dBm. Excellent signal condition
		Green Flashing Quickly	RSSI from -81 to -69 dBm. Good signal condition
		Orange Flashing Quickly	RSSI from -99 to -81 dBm. Fair signal condition
		Orange Flashing Slowly	RSSI less than -99 dBm. Poor signal condition
		Orange	No signal and the 4G LTE module is in service
		Off	No LTE module or LTE module fails
7	Power LED	Green	System is up and ready
		Red	Boot failure
8	Internet LED	Green	IP connected; WAN connection is ready
		Red	IP request failed
		Off	Either in bridged mode or WAN connection is not available
9	Gb Ethernet WAN	Use an outdoor Ethernet cable to connect to an internet device. Note: The Ethernet WAN port is a configurable LAN/WAN port, which automatically becomes an Ethernet WAN port when the internet interface is being configured in the GUI.	
		Green	Transmission speed is at Gigabit speed (1000Mbps)
		Orange	Transmission speed is at 10/100Mbps
		Blinking	Data being transmitted/received
10	Gb Ethernet LAN/PoE	LAN & PoE interface. Connect to the supplied 802.3at Gb PoE injector to provide power & data	
		Green	Transmission speed is at Gigabit speed (1000Mbps)
		Orange	Transmission speed is at 10/100Mbps
		Blinking	Data being transmitted/received
11	WIFI Antenna Connectors (5GHz)	Screw the supplied Wi-Fi antennas onto those 4 antenna connectors.	

Mounting Kit Installation

Mounting Kit includes:

1. Articulation Pole x 1
2. T-formed Bracket x 1
3. M8x40 Screw Bolt x 1
4. M8 Nut x 1
5. M8 Washer x 1
6. M6 Washer x 4
7. M8 Spring Washer x 1
8. M6 Spring Washer x 4
9. M6x16 Screw x 4



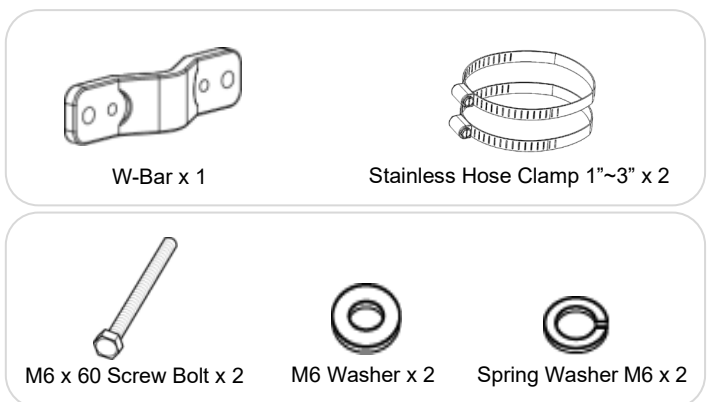
For **Wall Mount Installation**, you will need:

10. Wood Screw x 4
11. Wood / Gyprock x 4



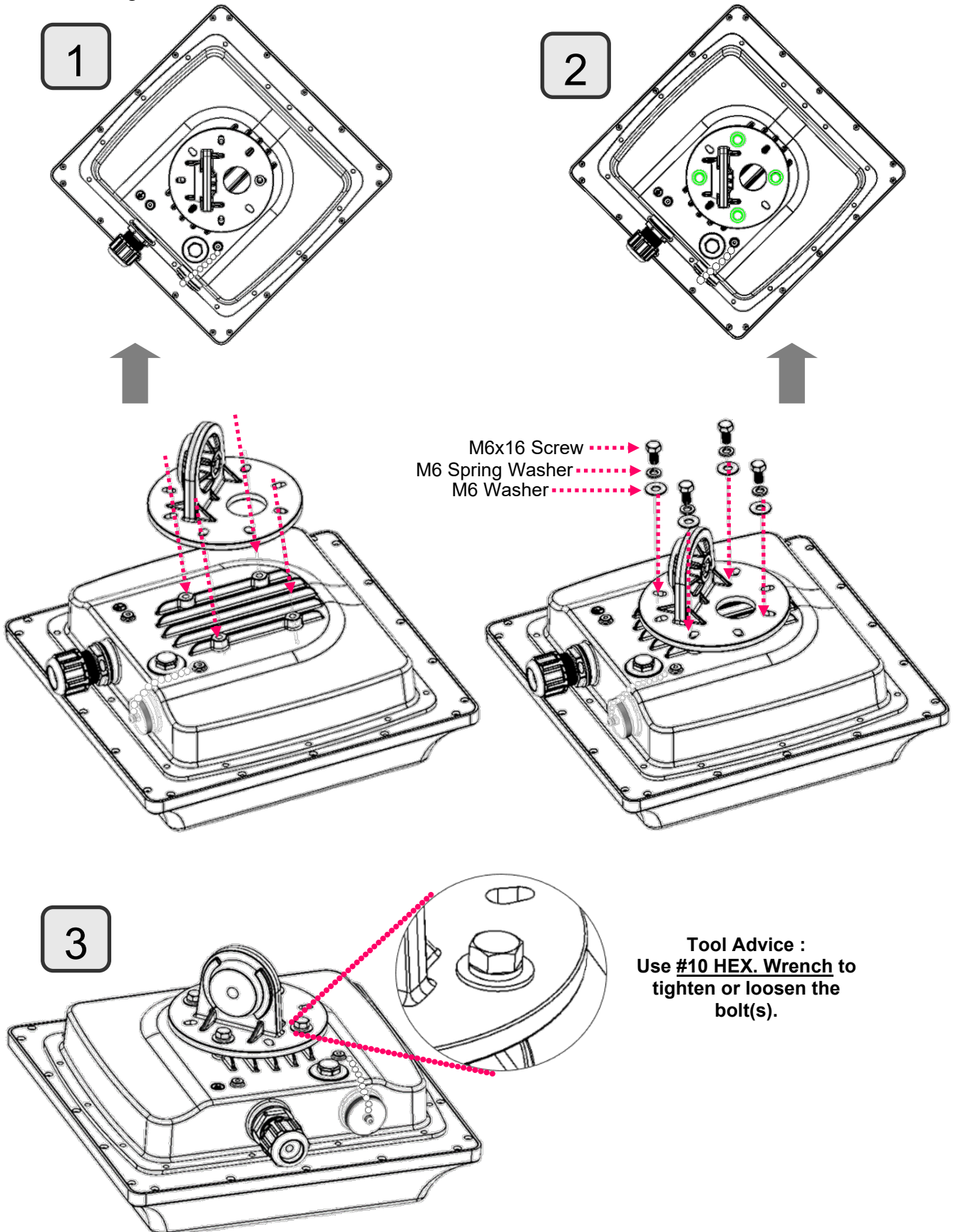
For **Pole Mount Installation**, you will need:

12. W-Bar x 1
13. Stainless Hose Clamp x 2
14. M6 x 60 Screw Bolt x 2
15. M6 Washer x 2
16. Spring Washer x 2

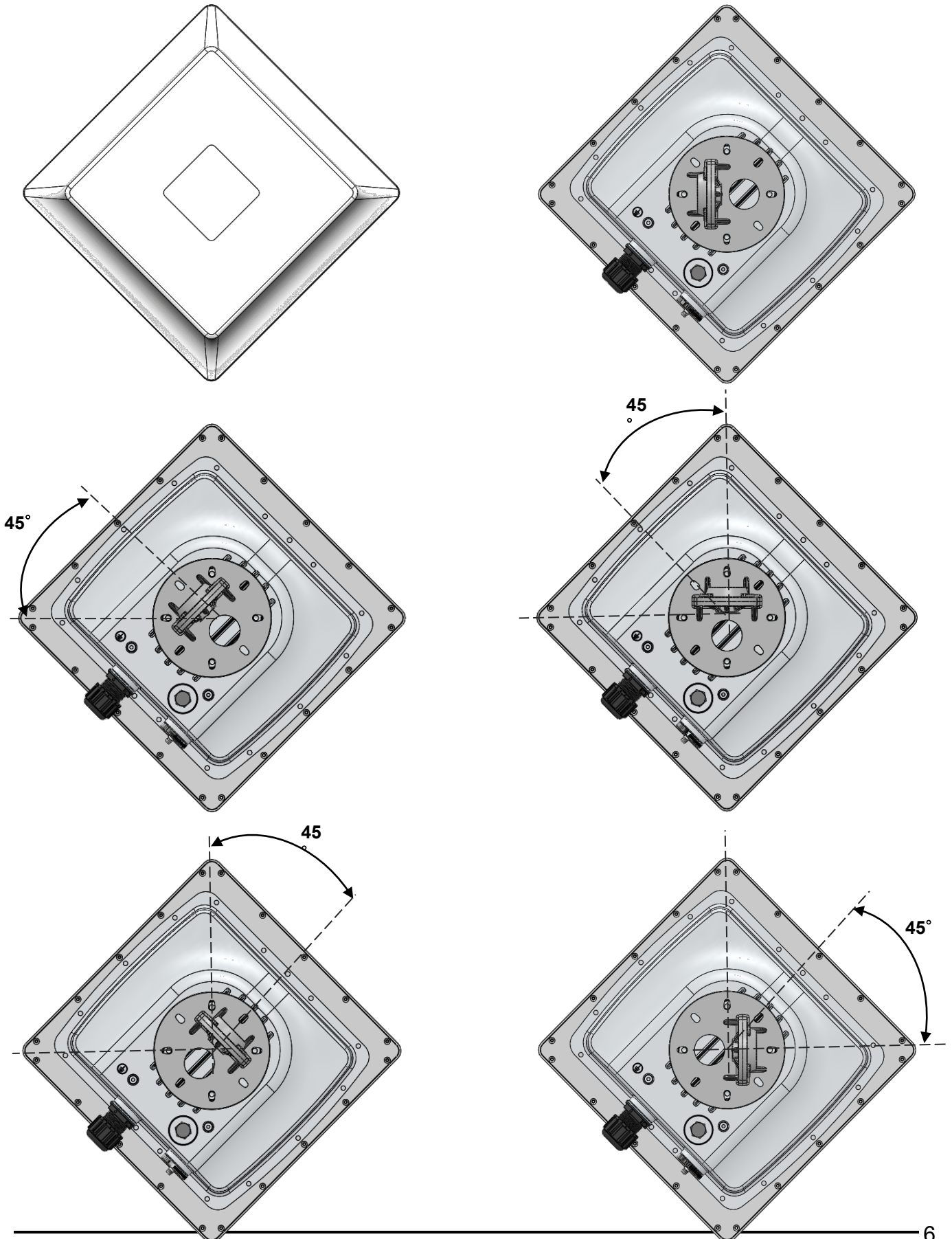


1. Attach the Articulation Pole to the Enclosure

Attach the articulation pole to the back of the BEC 7000 R26-W ODU enclosure using the supplied **M6 screws**, **M6 spring washers** and **M6x16 screws** which are included in the mounting kit.



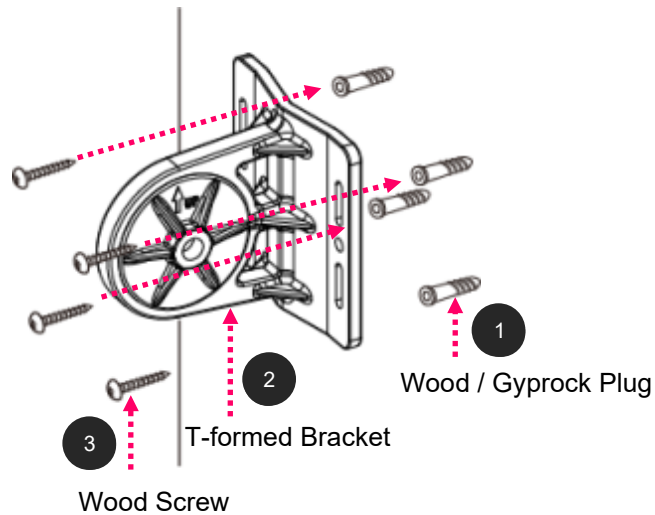
Note: The flexible mounting kit can be adjusted in multiple angles to align with the base station for higher efficiency.



2. Wall or Pole Mount Installation

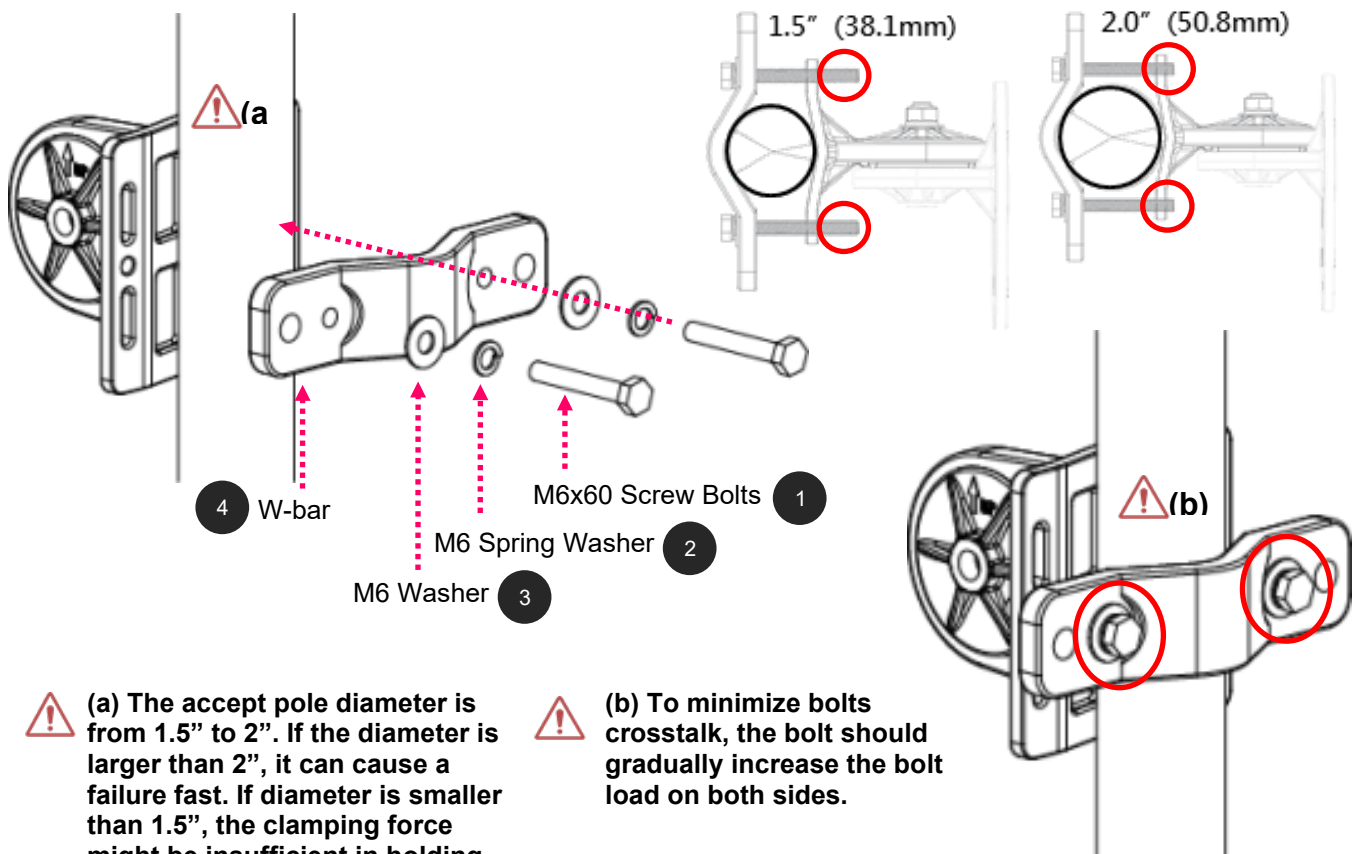
Mounting on Wall

Fix the T-formed Bracket to the wall by using **wood screws** and **Gyprock plugs**.



Mounting on a Pole between 1.5" to 2" (38.1~50.8mm)

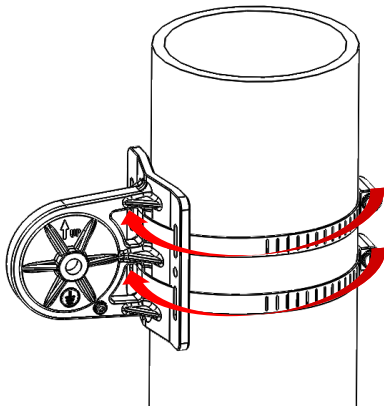
Attach the T-formed Bracket and the W-bar to the pole then use **M6x60 bolts**, **M6 spring washers** and **M6 washers** to fix the mounting kit onto the pole.



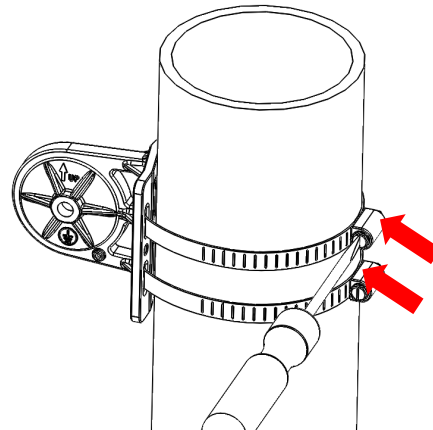
(a) The accept pole diameter is from 1.5" to 2". If the diameter is larger than 2", it can cause a failure fast. If diameter is smaller than 1.5", the clamping force might be insufficient in holding the device to the pole.

(b) To minimize bolts crosstalk, the bolt should gradually increase the bolt load on both sides.

Mounting on a Pole between 1" to 3" (25.4~76.2mm)



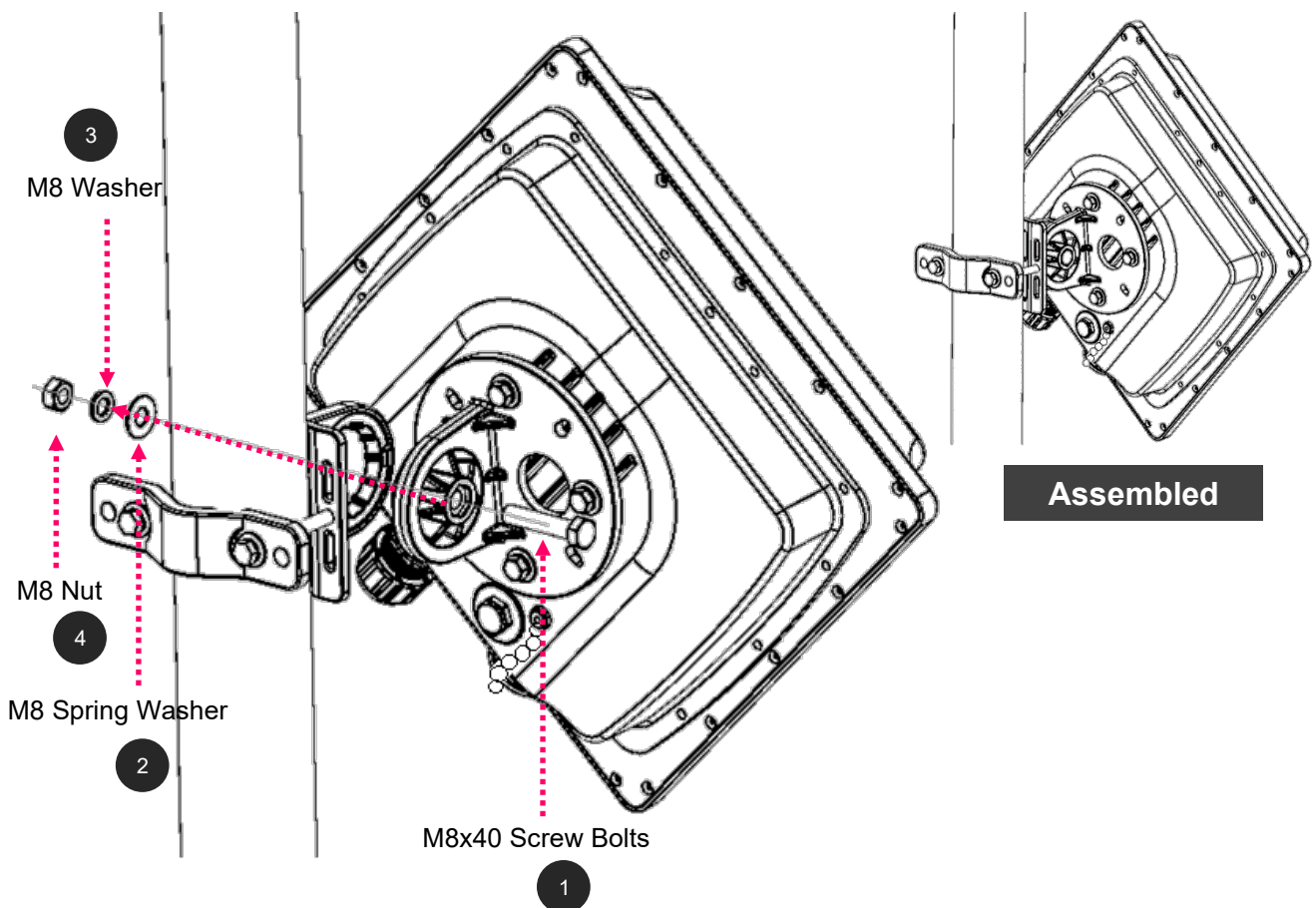
Use the stainless hose clamps through the T-formed Bracket.



Fix the T-formed Bracket to the pole by using the supplied stainless hose clamps. Use a flat-head screwdriver to turn the head of the screw clockwise to tighten it.

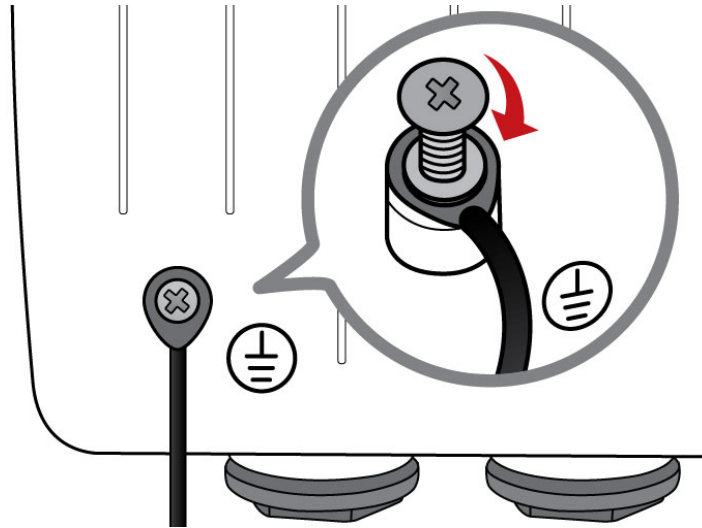
3. Attach the BEC 7000 R26-W Enclosure to the Pole

Attach the articulation pole (the BEC 7000 R26-W ODU enclosure) to the T-formed bracket using the supplied **M8 nut**, **M8 spring washer**, **M8 washer** and **M8x40 screw bolts**.



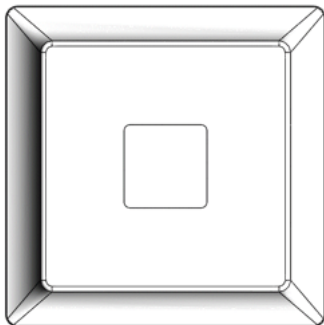
4. Proper Grounding to Complete the Installation

Attach the grounding wire to the BEC 7000 R26-W and tighten the screw.

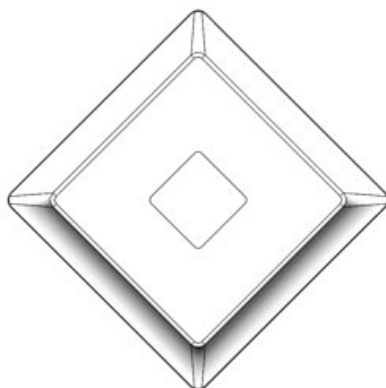
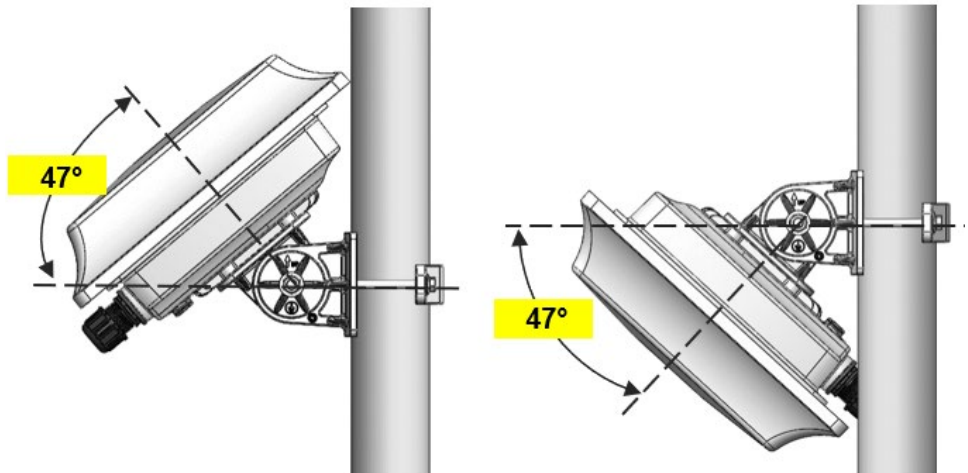


5. Position Adjustment

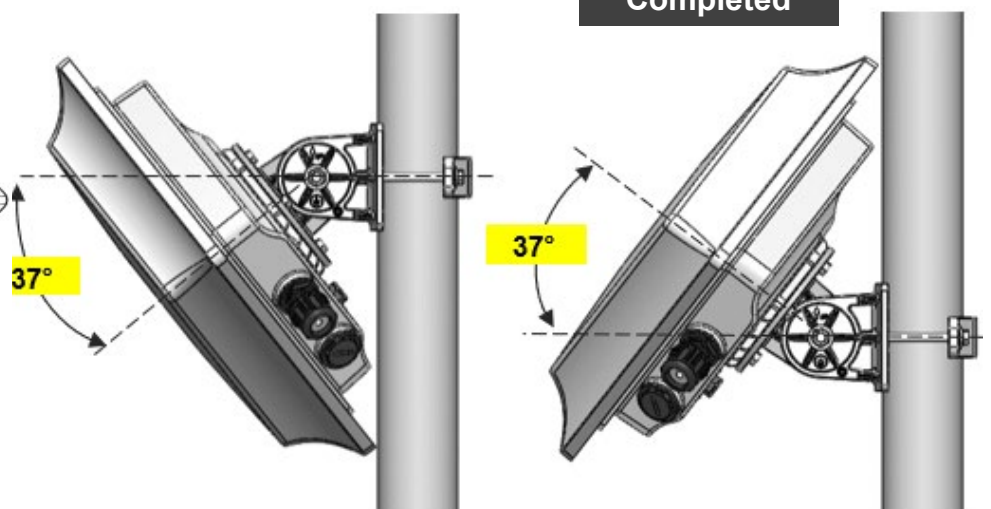
Adjust the BEC 7000 R26-W ODU until it reaches the desire elevation and depression angle, then tight the **M8 nut** (see **Attach the BEC 7000 R26-W Enclosure to the Pole** for more information)



Max. upward angle: 47°
Max. downward angle: 47°



Max. upward angle: 37°
Max. downward angle: 37°



Power Up and Initial Configuration of Your 7000 R26-W

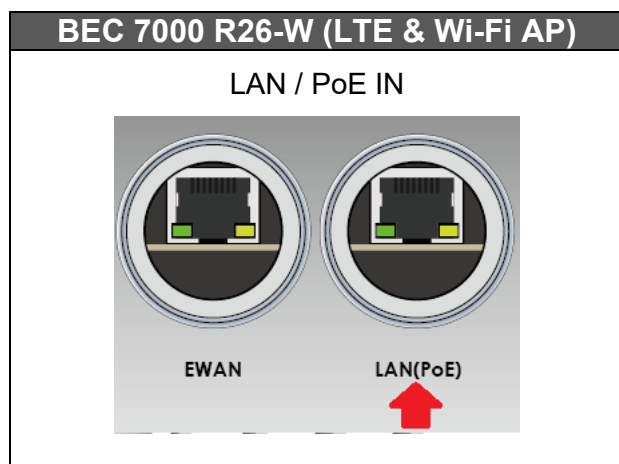
This section will instruct you on how to power up your BEC 7000 R26-W and perform setup configuration to get an internet connection.

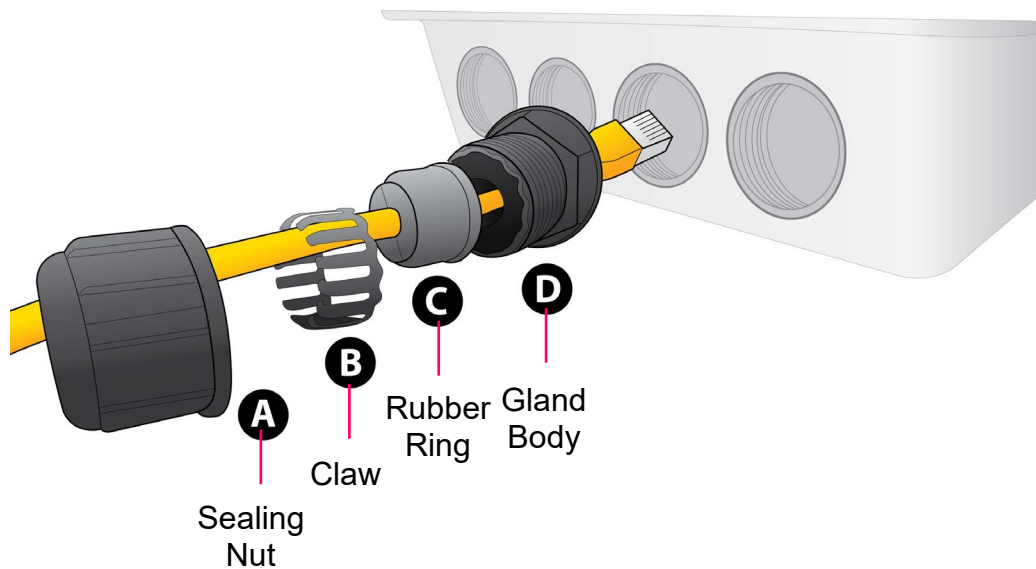
1. Power up your BEC 7000 R26-W router

Step 1: Assemble M25 cable gland



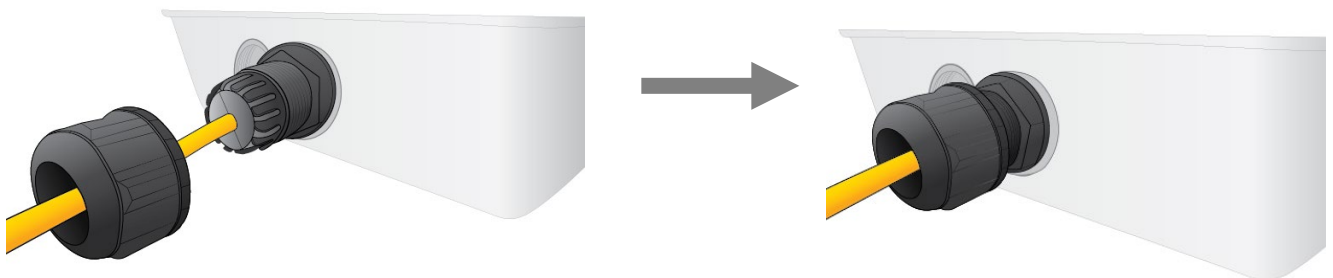
Step 2: Unscrew the ethernet port for **LAN(PoE)** on the 7000 R26-W, then insert the supplied outdoor Ethernet cable (RJ-45) through M25 cable gland, A to D,





Step 3:

- 3.1: Slide (A), (B), and (C) (sealing nut, claw, and rubber ring) over the Ethernet cable first
- 3.2. Slide and clip (B) over (C) (claw over the rubber ring)
- 3.3. Slide (D) (gland body) over the Ethernet cable
- 3.4. Insert Step 3.2 ((B)+(C)) into (D), claw and rubber ring into the gland body
- 3.5: Secure Step 3.4 to (A), tighten by rotating sealing nut clockwise to the gland body

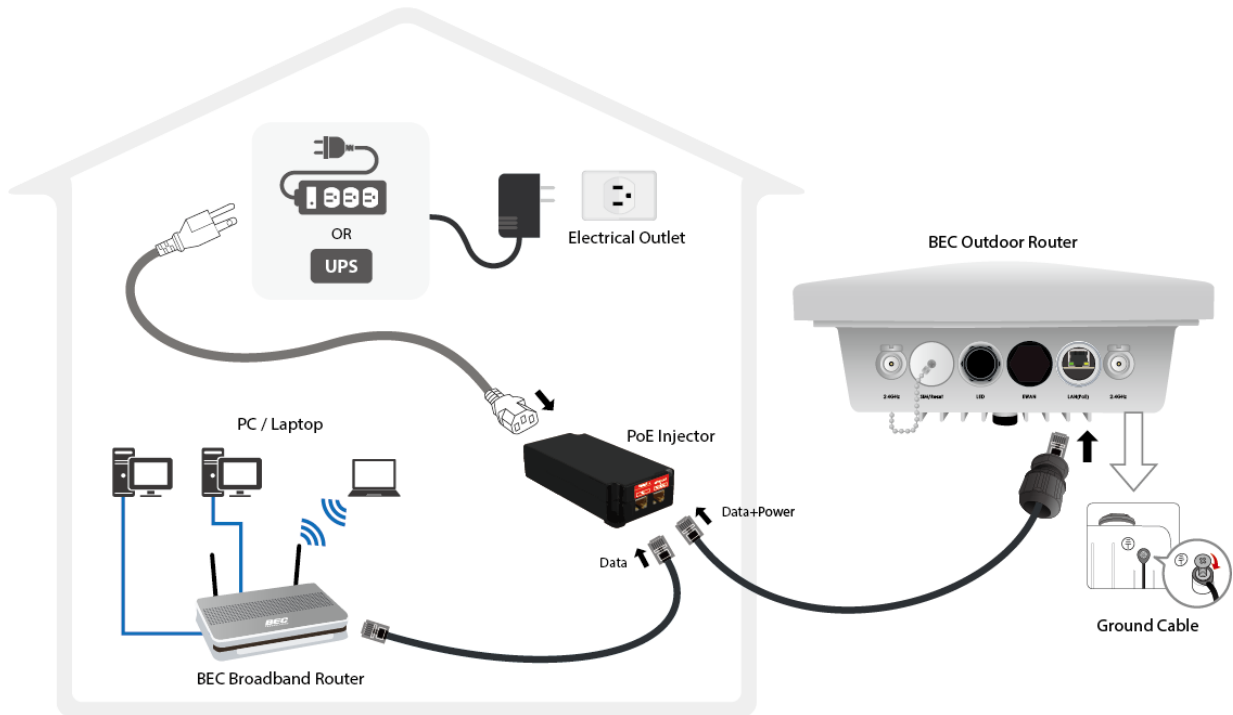


Step 4:

Powering via PoE Injector: Insert the other end of outdoor Ethernet cable (RJ-45) to the supplied Gigabit PoE injector **Data+Power** port. Use another Ethernet cable (RJ-45) and connect directly to the **Data** port on the injector and the other end of cable to a switch or broadband router.

IMPORTANT: It is recommended to put the Gigabit PoE Injector on an UPS or Surge Protector. Use the supplied grounding wire to ground your BEC 7000 R26-W ODU is REQUIRED!

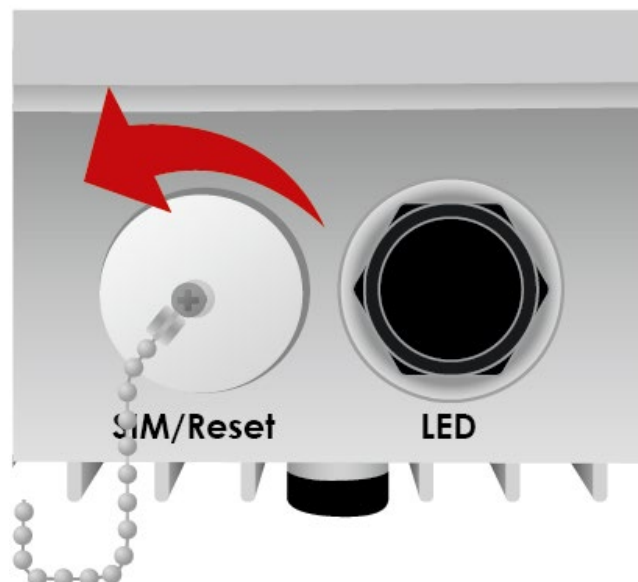
Powering via a PoE Switch: To connect the other of RJ-45 cable from the 7000 R26-W PoE IN port to a PoE switch.



2. Set up Your Internet Connection

BEC 7000 R26-W

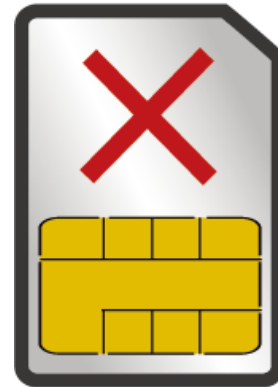
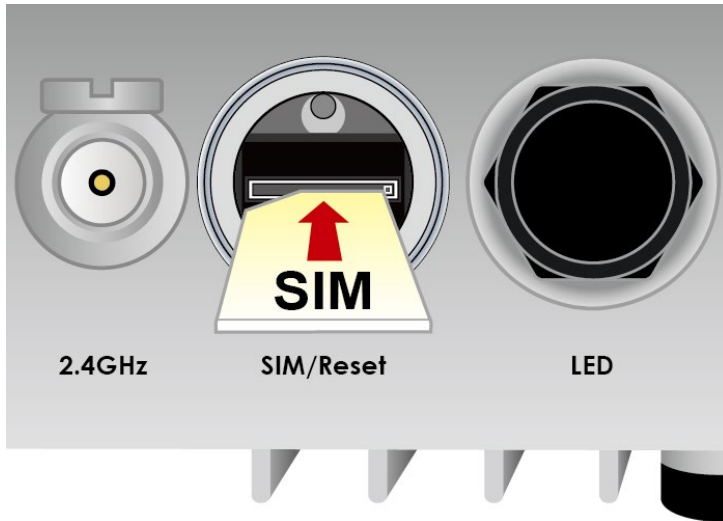
Step 1: Unscrew the cap of SIM card slot.



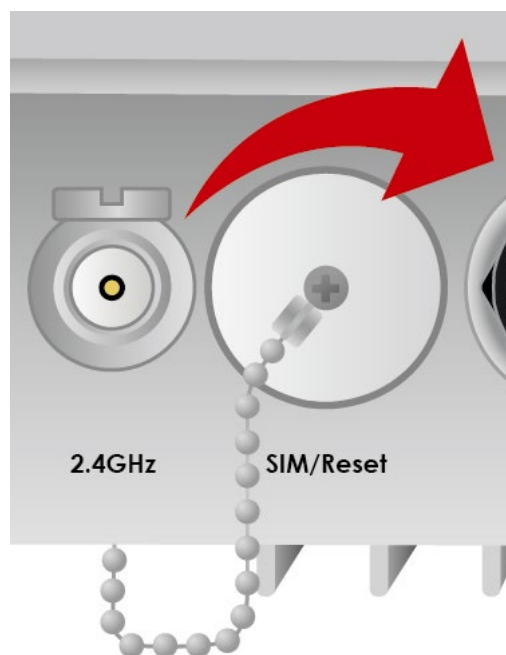
Step 2: Slide the SIM card with the metal contacts (gold plate) facing down to the SIM slot then push it all the way in until you hear the clicking sound.



It is recommended to use an industrial-grade SIM card.



Step 3: Screw the cap back tightly.



Please power off the device before inserting or removing the SIM card.

Step 4: Login to your BEC 7000 R26-W the 4G/LTE Wireless Outdoor Router

The default IP of modem is **192.168.1.254** with subnet 255.255.255.0. Make sure the attached PC to this router is in the same subnet and has an IP address in the range between 192.168.1.1 ~ 192.168.1.253.

Open a web browser and type **http://192.168.1.254** in the URL address bar.



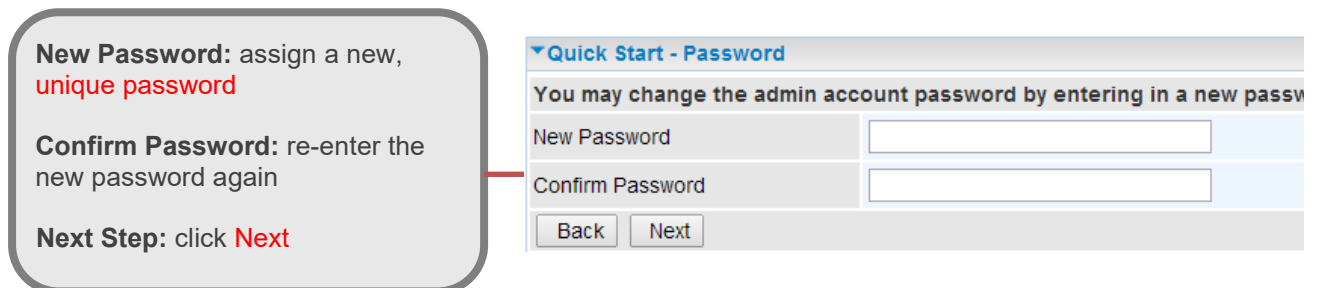
The login prompt will appear. Input the default username (**admin**) and password (**admin**) for Account type, Administrator. *This username / password may vary by different Internet Service Providers.

Please see the relevant sections of user manual for detailed instructions on how to configure your BEC 7000 R26-W outdoor router.

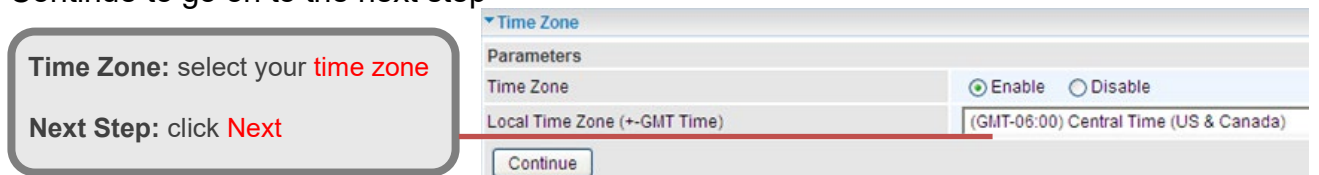
Step 5: Use the **Quick Start** wizard for fast Internet connection setups.

5.1 Change administration password: Setup a new password for “admin” account for device management. The default password is “admin”. Click Continue to go on to the next step.

**The password may vary by different Internet Service Providers.*



5.2 Time Zone Configuration: Enable and select your Time Zone then click Continue to go on to the next step



5.3 Internet Connection Setup: Fill out all relevant parameters provided by your ISP.

5.4 Saving Configuration Settings: The Setup Wizard has completed. Click **BACK** to make changes or correct mistakes. Click **NEXT** to save settings. If the Internet connection is not ready, please double check your WAN settings again.

Troubleshooting

1. None of the LEDs are on when you turn on the BEC Device.

Check the connection between the adapter and the router. If the error persists, you may have a hardware problem. In this case you should contact technical support.

2. You have forgotten your BEC login and/or password.

Try the default login and password, please refer to User Manual or consult with your Internet Service Provider. If this fails, you can restore your router to its factory settings by holding the Reset button on the back of your router for 6 seconds or more. *This username / password may vary by different Internet Service Providers.

3. Cannot ping any PCs on the LAN.

Check the LAN (PoE) LED on the Router. The LED should be on for the port that has a PC connected. If it is off, check the cables between your Router and the PC. Make sure you have uninstalled any software firewall for troubleshooting. Verify that the IP address and the subnet mask are consistent between the router and the workstations.

Product Support and Contact Information

Most problems can be solved by referring to the **Troubleshooting** section in the User Manual. If you have other inquiries or need further technical support, please contact with your Internet Service Provider or visit us at www.bectechnologies.net

FCC Statement

This equipment has been tested and found to comply with the limits for a Class B digital device, pursuant to Part 15 of the FCC Rules. These limits are designed to provide reasonable protection against harmful interference in a residential installation. This equipment generates, uses, and can radiate radio frequency energy and, if not installed and used in accordance with the instructions, may cause harmful interference to radio communications. However, there is no guarantee that interference will not occur in a particular installation. If this equipment does cause harmful interference to radio or television reception, which can be determined by turning the equipment off and on, the user is encouraged to try to correct the interference by one or more of the following measures:

- ♦ Reorient or relocate the receiving antenna.
- ♦ Increase the separation between the equipment and receiver.
- ♦ Connect the equipment into an outlet on a circuit different from that to which the receiver is connected.
- ♦ Consult the dealer or an experienced radio/TV technician for help.

FCC Caution:

This device complies with Part 15 of the FCC Rules. Operation is subject to the following two conditions:

(1) This device may not cause harmful interference

(2) This device must accept any interference received, including interference that may cause undesired operation.

Any changes or modifications not expressly approved by the party responsible for compliance could void the user's authority to operate this equipment. This device and its antenna(s) must not be co-located or operating in conjunction with any other antenna or transmitter.