

RF Specification

Frequency Range	617 - 698 MHz
	698 - 960 MHz
	1710 - 2170 MHz
	2300 - 2690 MHz
Polarization	Linear, Vertical
HPBW / Horizontal	360°
HPBW / Vertical	60°
Peak Gain	1.5 dBi Max. @ 617 - 698 MHz
	1.1 dBi Max. @ 698 - 960 MHz
	3.5 dBi Max. @ 1710 - 2170 MHz
	3.1 dBi Max. @ 2300 - 2690 MHz
Efficiency	41% Min. @ 617 - 698 MHz
	40% Min. @ 698 - 960 MHz
	77% Min. @ 1710 - 2170 MHz
	69% Min. @ 2300 - 2690 MHz
VSWR	6.5 Max. :1 @ 617 - 698 MHz
	4.0 Max. :1 @ 698 - 960 MHz
	2.5 Max. :1 @ 1710 - 2170 MHz
	2.5 Max. :1 @ 2300 - 2690 MHz
Power Handling	2W(cw)
Impedance	50 Ohms
Connector	SMA Plug

**BEC SX - V2**

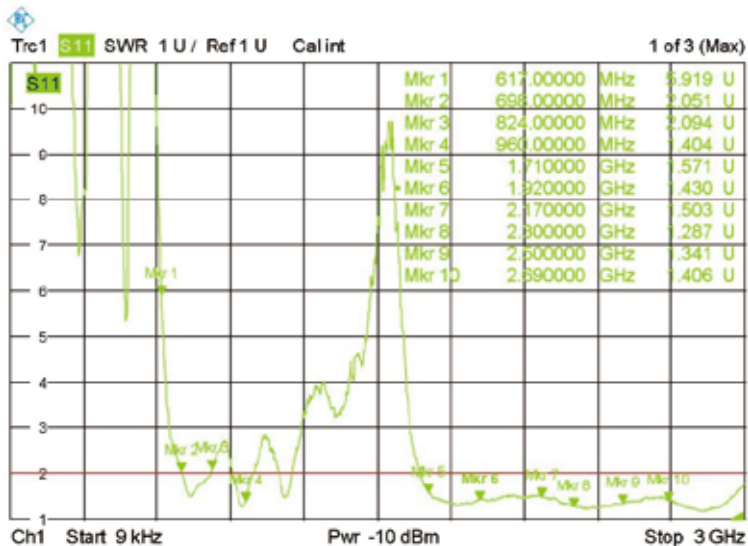
Environment & Mechanical Information

Temperature	-30°C to +70°C (-22°F to +158°F)
Humidity	95% @ 55°C
Antenna Casing (Color)	Black
Antenna Casing (Material)	ABS
Weight	52g (0.11lbs)
Dimensions (L x W x OD)	8.27" x 1.65" x 0.51" (210 x 42 x 13 mm)

Performance Summary

✓ VSWR

Frequency (MHz)	617 - 698	698 - 960	1710 - 2170	2300 - 2690
VSWR	6.5 Max. :1	4.0 Max. :1	2.5 Max. :1	



✓ GAIN TABLE

Frequency (MHz)	3D			Avg. Gain			Peak Gain		
	Efficiency	Avg. Gain	Peak Gain	XY - Plane	YZ - Plane	ZX - Plane	XY - Plane	YZ - Plane	ZX - Plane
617	41%	-3.9	-1.6	-1.9	-4.9	-5.0	-1.6	-1.7	-1.8
652	52%	-2.9	0.2	-2.2	-3.7	-3.7	-1.8	-0.5	0.1
663	56%	-2.5	1.5	-2.6	-3.2	-3.2	-1.6	0.2	1.5

Frequency (MHz)	3D			Avg. Gain			Peak Gain		
	Efficiency	Avg. Gain	Peak Gain	XY - Plane	YZ - Plane	ZX - Plane	XY - Plane	YZ - Plane	ZX - Plane
698	76%	-1.2	1.0	0.4	-2.3	-2.3	0.9	0.8	0.9
710	79%	-1.0	1.1	0.5	-2.1	-2.1	1.1	1.0	1.0
734	72%	-1.4	0.7	-0.4	-2.5	-2.5	-0.2	0.6	0.7
751	65%	-1.8	0.4	-1.1	-2.7	-2.7	-0.8	0.4	0.4
768	64%	-2.0	0.1	-1.3	-2.8	-2.8	-1.1	0.0	0.0
798	64%	-1.9	-0.4	-1.0	-2.9	-2.9	-0.7	-0.5	-0.6
824	59%	-2.3	-0.3	-1.7	-3.2	-3.2	-1.4	-0.4	-0.5
849	50%	-3.0	-0.6	-2.6	-3.7	-3.7	-2.4	-0.7	-0.8
869	48%	-3.2	-0.6	-2.7	-3.9	-3.9	-2.4	-0.7	-0.8
894	46%	-3.4	-0.9	-2.7	-4.2	-4.3	-2.6	-1.0	-1.1
925	42%	-3.8	-1.1	-3.0	-4.5	-4.6	-2.8	-1.1	-1.4
960	40%	-4.0	-0.5	-3.7	-4.5	-4.5	-3.5	-0.6	-0.6

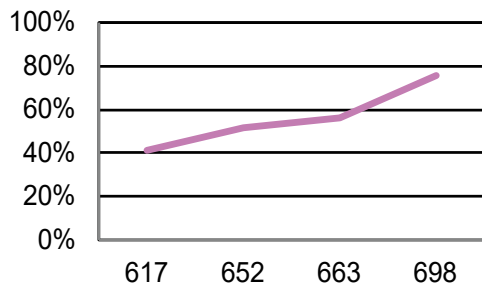
✓ GAIN TABLE (CONT.)

Frequency (MHz)	3D			Avg. Gain			Peak Gain		
	Efficiency	Avg. Gain	Peak Gain	XY - Plane	YZ - Plane	ZX - Plane	XY - Plane	YZ - Plane	ZX - Plane
1710	78%	-1.1	2.3	1.4	-1.8	-3.1	2.3	2.4	0.5
1805	77%	-1.1	2.7	1.8	-1.9	-3.2	2.6	2.7	1.1
1880	79%	-1.0	3.3	1.8	-1.8	-3.0	2.8	3.3	1.7
1920	82%	-0.8	3.5	2.0	-1.6	-2.9	3.0	3.5	2.0
2110	81%	-0.9	2.6	1.1	-1.6	-2.8	2.2	2.5	1.4
2170	79%	-1.0	2.2	0.9	-1.7	-2.9	1.8	2.2	0.5

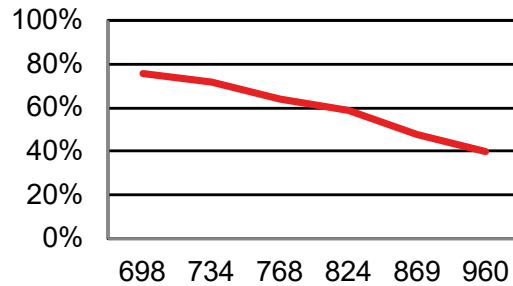
Frequency (MHz)	3D			Avg. Gain			Peak Gain		
	Efficiency	Avg. Gain	Peak Gain	XY - Plane	YZ - Plane	ZX - Plane	XY - Plane	YZ - Plane	ZX - Plane
2300	85%	-0.7	2.7	1.5	-1.3	-2.6	2.6	2.7	0.5
2350	83%	-0.8	2.5	1.4	-1.3	-2.7	2.4	2.5	0.6
2400	83%	-0.8	2.6	1.4	-1.3	-2.6	2.5	2.6	1.2
2500	78%	-1.1	2.4	0.4	-1.4	-2.5	1.7	2.4	1.8
2595	72%	-1.4	3.1	-1.3	-1.5	-2.4	0.2	3.1	2.4
2690	69%	-1.6	3.1	-2.7	-1.7	-2.7	-1.3	3.1	2.1

✓ EFFICIENCY

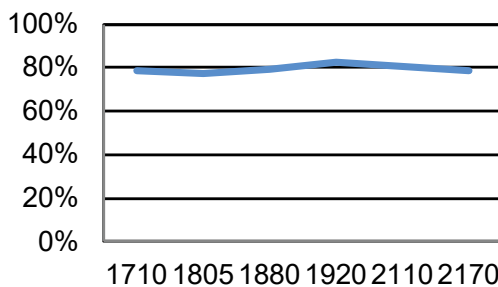
617MHz~698MHz



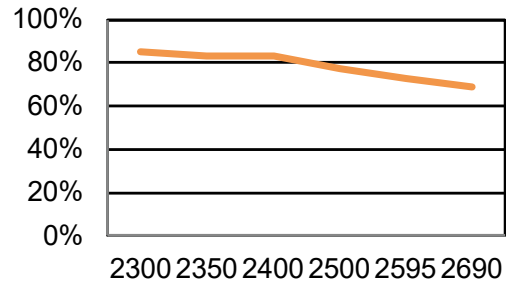
698MHz~960MHz



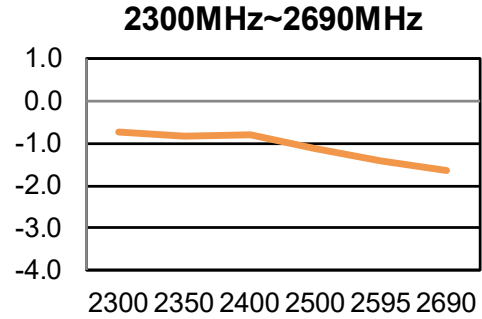
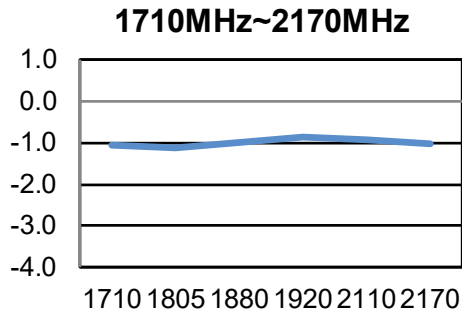
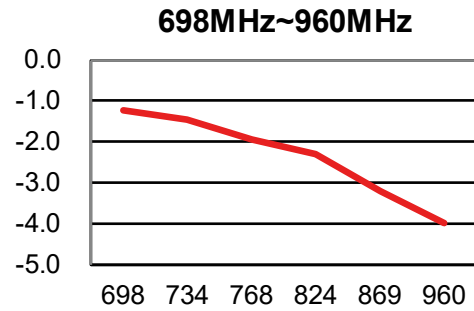
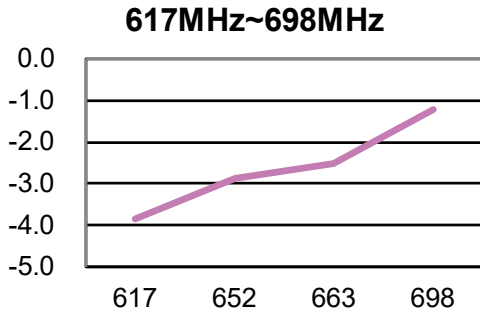
1710MHz~2170MHz



2300MHz~2690MHz



✓ AVERAGE GAIN



✓ PEAK GAIN

